

Aliens from Dark Earth

Evolution of Dark Plasma Life Forms on Earth

© By JAY ALFRED

When reading the UFO literature, have you ever wondered why aliens would express so much concern about the Earth and what humans are doing to it? These aliens are normally assumed to be from some distant galactic system within our visible universe who can undertake journeys at incredible speeds.

This assumption begs the question: Why would a distant extra-terrestrial civilisation be so concerned about our planet, a tiny rock in an obscure part of the galaxy? Wouldn't it be more probable for a co-inhabitant of Earth, who would suffer the real consequences of a devastated Earth, to get nervous and fearful about human activities on this planet? Perhaps these aliens are not extra-terrestrial, but intra-terrestrial co-inhabitants of this planet.

The author's *Dark Plasma Theory* (published in 2006) holds that the physical-dense Earth is gravitationally coupled to a counterpart dark matter Earth. Dark matter is invisible matter which is five times more abundant in the universe than ordinary matter. The bulk of this matter is believed to be composed of particles outside the physicist's "Standard Model" (in a sense we could describe them as "non-standard" particles).

This "sister" Earth was co-accreted with the physical-dense Earth about 4.6 billion years ago from dark matter components in the embryonic Solar System and underwent further transformation when the planet that later created our Moon (which came with its own dark matter halo) collided into Earth. Through the further influx of dark matter particles from the galactic halo (including asteroids, meteorites and comets harbouring dark matter particles which have been plunging into the Earth for billions of years) this halo

bloomed to form a dark counter-Earth more than a thousand times the volume of the visible Earth.

The average density of the dark matter particles in this counterpart Earth is very low. Could tangible dark matter objects form in this invisible Earth? To answer this question we only need to consider that the universal average density of ordinary matter is lower than dark matter. Nevertheless, dense ordinary matter objects are seen all around us. The average dark matter density in the galaxy is very low. Nevertheless, dark matter clumps in the galaxy do form dark matter clouds. Similarly, dark matter within the dark Earth

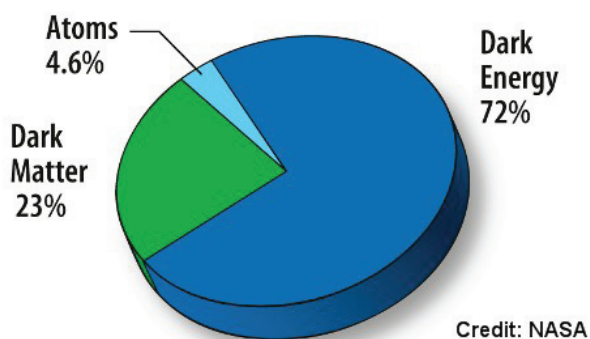
clumps to form denser blobs with very little dark matter in between the blobs.

The density of dark matter particles in these blobs are therefore many times greater than the average density of dark matter around the visible Earth (which itself had been computed by scientists at the end of 2008 to be many times greater than the average density in the Milky Way). However, in comparison with ordinary matter objects the densities of these blobs are very much lower.

According to the author's *Dark Plasma Theory* a substantial amount of dark matter in the universe is composed of plasmas of dark matter particles. A scientific paper at the end of 2008 by Caltech (California Institute of Technology) scientists upholds this view. Hence, these blobs are plasma blobs formed through self-organisation as explained by plasma physics (including magnetohydrodynamics) and non-linear dynamics.

The blobs which found themselves in more favourable conditions developed into primitive dark plasma cells in the early dark Earth which effectively became a dark biosphere. (Minimal plasma cell systems with life-like qualities were produced in the laboratory by scientists Lozneanu and Sanduloviciu. Their experiments were reported in 2003.) After many millions of years, these cells evolved into a variety of more complex plasma life forms and continued to evolve so

**This "sister" Earth
was co-accreted with
the physical-dense
Earth about 4.6 billion
years ago from dark
matter components
in the embryonic
Solar System...**



that plasma life forms which existed hundreds of millions of years may no longer be evident now.

These dark plasma life forms are dissipative structures which were far from equilibrium. They were as varied in scale, structure and intelligence as carbon-based life forms on the visible Earth – as different as a microbe from a whale; a mosquito from a tiger; a giraffe from a crocodile; an ant from a human being. Their degrees of intelligence and awareness were as different as a centipede’s awareness to the awareness and intelligence of Homo sapiens.

Some of these dark plasma life forms have interacted with us in the past (intentionally or unintentionally). The entities that we have identified as ghosts, angels, demons, deities (for example the Marian apparitions in the atmosphere), biological UFOs (associated with UFO sightings in the atmosphere), aliens, fairies, sightings of the recently deceased (on the surface of the Earth) and orbs of light which appear to go through physical barriers (without contracting) are all exotic plasma life forms from the dark biosphere of this counterpart Earth.

The primitive dark plasma cells provided the scaffolding for ordinary biological cells to form in the early Earth. Hence, primitive biological cells evolved with an envelope of dark plasma around them. The dark plasma envelope around humans and other ordinary life forms caused dark matter in Earth’s environment to clump around them to form dark bioplasma bodies which coupled to the visible carbon-based bodies. When the carbon-based bodies died, the bioplasma bodies decoupled and continued to survive, retaining their awareness in Earth’s dark biosphere. These surviving plasma life forms then formed symbiotic relationships with other carbon-based bodies on Earth, including with humans. The symbiosis allowed shared cognitive systems to develop which gave continuity to the identities (i.e. autobiographical memories) of sentient individuals.

PARALLEL PLASMA EARTH – THE HABITAT OF PLASMA LIFE FORMS

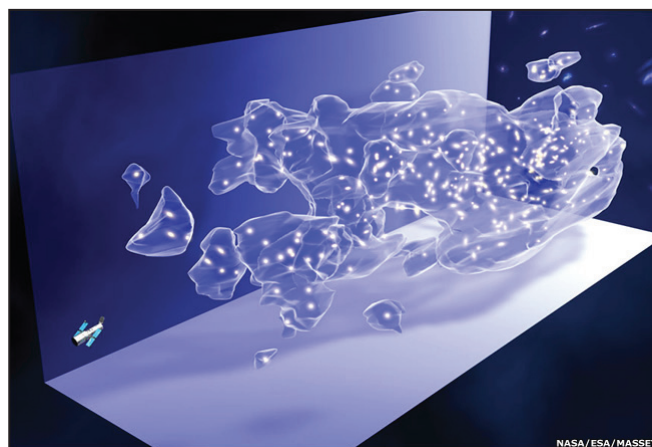
The counterpart dark matter Earth, composed of low density plasma and co-rotating with our visible Earth, can effectively be considered another planet. The sporadic interactions with plasma-based beings, who may appropriately be called “aliens” (since they are, strictly speaking, from another planet – although a counterpart Earth), can be studied in a more rigorous scientific framework once our current

technology improves to take into account particles beyond the physicist’s Standard Model. All human beings are the symbiotic products of carbon-based bodies and (alien) plasma-based bodies.

Near-death experiences, astral travelling, (genuine) alien encounters, angelic visitations, apparitions of saints or deities – both privately to individuals and to the public at large leading to mass sightings (such as the Marian apparitions or swarms of UFOs in the atmosphere) occur in this dark matter counterpart of Earth and are sometimes superimposed on our more familiar Earth environment (depending on the type of encounter, see below). The relative dimensions of the invisible dark Earth to the visible rocky Earth may be very similar to the relationship of Jupiter’s gas envelope (which is about 142,000 km in diameter) to its small rocky core (which, based on late-2008 computations, is about the diameter of the visible Earth). Dark Earth is therefore as large as Jupiter, which can comfortably fit more than 1,000 visible Earths inside itself.

Some plasma life forms in our atmosphere would be similar to those proposed by Carl Sagan. In a 1976 paper, Sagan and Edwin Salpeter proposed that creatures resembling hot air balloons could exist in Jupiter’s atmosphere. They based their hypothesis on the ecology of our oceans where different life forms exist at different levels: simple life forms, such as plankton, thrive at the top level; at a lower level fish exist which feed on these plankton; below this are marine predators which feed on the fish. The Jovian equivalents of these were the “sinkers,” “floaters,” and “hunters.” The “floaters” were giant gas bags which generated heat through their own metabolism, feeding off sunlight and free molecules. They moved by pumping out helium. The “hunters” were squid-like creatures which used jets of gas to propel themselves. The scientists calculated that the “hunter” variety could grow to be many kilometres across. Arthur C. Clarke imagined similar types of life forms in Jupiter’s atmosphere.

Just like Jupiter, Earth’s equally large dark plasma halo

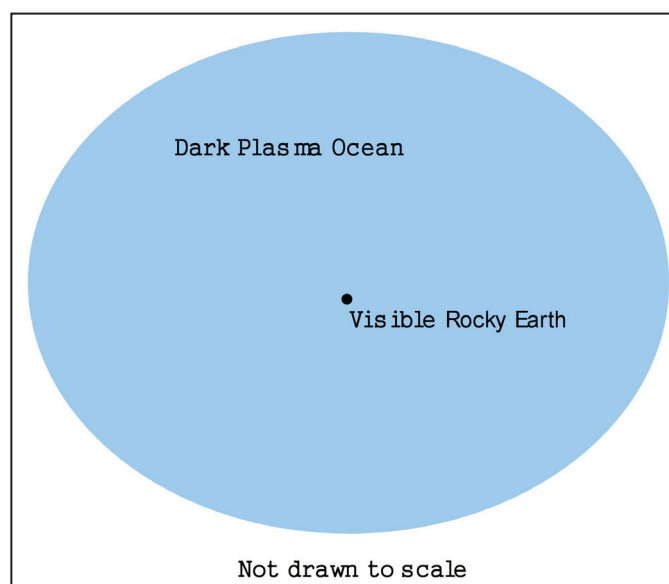


If we could see them, this NASA graphic illustrates the way dark matter blobs might look in space as they approach a satellite (bottom left).

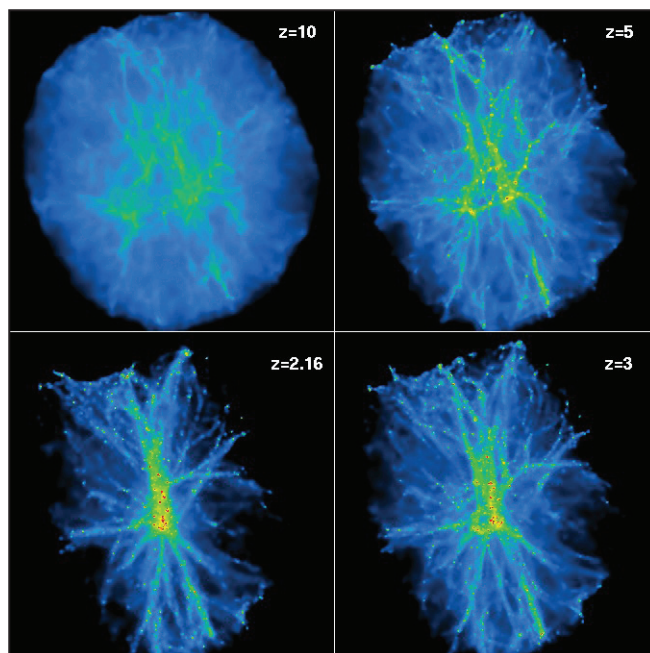
would not have any hard surface. Hence, plasma life forms would essentially float in an oceanic type atmosphere of tenuous cold dark plasma. While the biosphere of the physical-dense Earth occupies only a small volume of the Earth, i.e. largely confined to plus or minus 10km from sea level (which is less than 1% of the volume of the Earth), the plasma Earth is composed wholly of plasma making it more like a gigantic plasma ocean habitable to dark plasma life forms.

Like our visible oceans, this generally invisible plasma ocean is subject to tides because of the gravitational interactions with the Earth-Moon-Sun system. In addition, it is also buffeted by the dark solar wind and other dark matter winds emanating from other parts of the galaxy which generate a “tail,” parallel to the direction of the winds, which can reach the Moon in certain situations. Since particle density can also change due to these influences, the size of the plasma bubble also undergoes changes (just like Earth’s visible atmosphere). The shape and size of this dark plasma Earth is therefore dynamical and is constantly size and shape-shifting like a dancing candle flame. Furthermore, just like the Sun (which is a ball of plasma), it experiences differential rotation; the rate of rotation in the equatorial region slows down as it approaches the poles. The length of day and night will therefore vary in different parts of dark Earth.

Life forms often move in all three dimensions quite extensively (i.e. like fishes in the sea, not like human beings walking on the surface of the Earth) in this extensive plasma ocean. There is enormous biodiversity in this plasma planet which teems with life. Life-like plasma objects that sporadically appear in our atmosphere are actually floating or swimming in this ocean. They are therefore able to dart back and forth (like squid, cuttlefish and octopuses) or swim majestically (like manta rays). They may be as



The relative dimensions of the invisible dark Earth to the visible rocky Earth may be very similar to the relationship of Jupiter’s gas envelope to its small rocky core. Dark Earth is therefore as large as Jupiter, which can comfortably fit more than 1,000 visible Earths inside itself.



*Simulation of dark matter evolution.
(Source: Rob Thacker, Queens University)*

large as whales. There is hardly any “sonic boom” when they zip-off because of their extremely low mass which is largely composed of collisionless plasma. Plasma life forms in the atmosphere have been seen at Marian apparitions, in Chinese history as dragons, and UFO sightings. They also include what the Qur’an refers to as “jinns.”

The famous Islamic cosmographer and Persian physician who lived in the thirteenth century, Zakariya ibn Muhammad ibn Mahmud Abu Yahya al-Qazwini, states that jinns “are aerial animals, with transparent bodies which can assume various forms.” This description could also fit Trevor Constable’s plasma-based “sky creatures.” Some writers have already argued that jinns are in fact plasma life forms, for example, Dr. Ibrahim B Syed, a Clinical Professor of Medicine at the University of Louisville, School of Medicine. Gordon Creighton and Chris Line, as far back as 1989, have argued that UFOs are in reality jinns in different issues of the *Flying Saucer Review*. Nevertheless, aerial jinns comprise only one category of plasma life forms in Earth’s dark biosphere.

The idea that Earth’s atmosphere could be the habitat of living aerial creatures which manifest as “biological UFOs” has been put forth before. Charles Fort held this belief; Kenneth Arnold, who kick-started modern Ufology in 1947, also believed UFOs were living creatures. He held that these biological UFOs were space animals with the ability to change their density allowing them to apparently appear or disappear. Constable has photographed many different types of “plasmatic creatures” in the atmosphere using fast infrared film and has been researching these life forms for several decades.

The British Ministry of Defense (MOD) recently completed a four year study (1996 to 2000) on “Unidentified Aerial Phenomena (UAP)” which looked at data compiled

from reports of UAPs received by the MOD over a 10 year period (1987 to 1997). The report concludes that most of these sightings were due to ordinary plasma bodies generated by incompletely burnt-out meteors entering Earth's atmosphere during meteor showers, although with certain reservations. The researchers concluded that: "It is not certain that the radiation/fields are conventional and electromagnetic in nature... any pursuit of this process of identification or elimination is pointless if it turns out that UAP radiation is other than EM [electromagnetic] radiation as we currently understand it."

Indeed, dark plasma life forms radiate dark (not ordinary) electromagnetic waves. The author believes that the MOD detection data provides evidence of clumps or blobs of dark plasma that populate the atmosphere and are detected when particles in the dark plasma blobs interact with standard particles through nuclear and electron recoils; generating light, heat and electrical phenomena that can be detected temporarily or intermittently. The MOD report also alluded to the possible existence of plasma life forms due to the reported intelligent life-like behaviour of observed UAPs in the reports they received.

Recent scientific papers at the end of 2008, which studied acceleration anomalies in spacecrafts and satellites orbiting the Earth and more detailed calculations of dark matter density in the Solar System and around the Earth, also pointed to the possible existence of blobs of dark matter in our atmosphere.

Within the context of Dark Plasma Theory, these point to dark plasma blobs within the Earth environment.

Meteors, according to Dark Plasma Theory, contain an envelope of dark plasma. Persons using "dark sight" will be able to see a much larger halo of light around the meteor which would emit dark light. While the ordinary matter component of the meteor is easily explained, the dark component is evident when studying UAPs in more detail, including their peculiar ability to transform UFO sightings into experiences which are normally associated with the paranormal. The idea of a dark plasma envelope around a meteor, asteroid or comet allows the development of a theory of "dark panspermia" which has been explored in another article by this author.

DETECTING DARK PLASMA LIFE FORMS

Generally, dark plasma is collisionless. However, during certain events when particle density increases, some dark matter particles that oscillate within the dark plasma collide with the nuclei and electrons of ordinary matter atoms. This generates light (as a result of scintillations), heat (due to the transfer of momentum) and electricity (when electrons get kicked-out of their orbitals during the ionization process, generating currents). The ionization process also generates short-lived ordinary plasma (i.e. composed of ordinary matter particles). When this ordinary plasma is sufficiently dense it can reflect-off microwaves from radars and be detected by them temporarily and/or intermittently. The heat can be detected with infrared cameras (such as the one used by Constable) and calorimeters. The light can be detected by cameras (if visible) and analysed using spectrometers and bolometers.

The frequencies generated by the ordinary plasma are expected to be mostly in the microwave segment of the electromagnetic spectrum, which is associated with electron oscillations in the ordinary plasma. These microwaves can generate heat in living tissue and anomalous sounds within the head. The plasma life form has therefore both a dark plasma component and an ordinary plasma component. The ordinary plasma increases in density and frequency as the plasma frequency of the dark component increases.

As the plasma frequency of the dark plasma increases, the frequency of the electromagnetic waves radiated by the ordinary plasma can move up into the visible segment of the electromagnetic spectrum temporarily and/or intermittently. These can be detected using cameras (so long as it is above the plasma frequency of the ordinary plasma) – as seen in various recorded cases, even public apparitions such as "Mary's" appearance at the top of a Church in Zeitoun between 1968 and 1971, which was broadcast on TV to millions. No doubt, the British MOD reports of UAPs also record instances when dark plasma betrays its presence when ordinary plasma is generated around it causing it to become temporarily visible. This is a Type 1 encounter (as explained below).

Since the density of dark matter particles within the



There is enormous diversity of life forms on our dark matter "sister" Earth, which is theorised to be like an extensive plasma ocean. Life-like plasma objects that sporadically appear in our atmosphere are actually floating or swimming in this ocean. Some of them would move about in a similar manner to certain sea creatures including jellyfish (above).

dark plasma blobs is much higher than the spaces between the blobs, extremely small amounts of radiation (which fall below normal detection levels) will emanate from these spaces. A low level of microwave radiation will, however, emanate from invisible (generally fast) moving point sources (i.e. the plasma life forms) which would be spread out over a very wide area (remember that the dark biosphere is more than a thousand times larger than the visible Earth). Furthermore, most of these life forms do not have to be restricted to the surface of the Earth or the thin biosphere where most ordinary matter life forms exist. Hence, encounters with humans are generally rare.

PROPERTIES OF BIOPLASMA BODIES

Bioplasma bodies, composed of plasmas of dark matter particles, generate (dark) electromagnetic fields and radiate (dark) electromagnetic waves. Embedded in these bioplasma bodies are cells that function as “plasma antennae” which can tune-in and receive dark electromagnetic waves generated by other bioplasma bodies. (Plasma antennae are actually used today in some scientific laboratories.)

According to Dark Plasma Theory, the bodies of plasma life forms that we encounter are molded by our expectations which radiate out from our own bioplasma bodies in the form of (dark) electromagnetic waves and are received by them through their embedded antennae. The nearer dark plasma life forms come to you the better they are able to tune-in to the thought waves (i.e. electromagnetic waves modulated by your thoughts) you are radiating out from your bioplasma body. For example, in the Marian apparitions at Fatima (Portugal) in 1917, the children saw a ball of light resolving into a man-like angel as it got nearer to them.

The total rest mass of a bioplasma body is very much lower than the physical-dense body. The extremely low rest mass can give the extremely tenuous bioplasma bodies a more pronounced macro-quantum effect and wave properties (compared to the more dense macroscopic objects in our visible universe) due to the well-known de Broglie relationship, particularly when they are not in motion or moving slowly.

The properties of dark plasma life forms include the following:

- They can emit light (i.e. they are “self-luminous” and generate colourful auras and halos), reflect light (having a shiny appearance), appear to be black and opaque or alternatively transparent or translucent (allowing them to apparently materialise or dematerialise), depending on the interaction between the plasma frequency of the life form and the frequency of electromagnetic waves in the vicinity or emanating from within the plasma.

The nearer dark plasma life forms come to you the better they are able to tune-in to the thought waves you are radiating out from your bioplasma body.

- They can generate ordinary plasma which produce electromagnetic fields and radiate electromagnetic waves when immersed in ordinary matter (e.g. when surrounded by air which is composed of atoms of ordinary matter).
- The ordinary plasma component is responsive to electromagnetic fields and waves. The dark plasma component is responsive to dark electromagnetic fields and waves.
- The denser body of the life form, which varies from one plasma life form to another, resides within an ovoid which is enclosed by a bi-layered plasma (Langmuir) sheath.
- Double helical currents, aligned with the longer axis of their bodies may be discerned. They also have networks of filamentary currents within their bodies.
- They possess rotating orifices (or plasma vortexes)

that suck in or spew out dark matter particles. They can emit beams of dark matter particles from these orifices.

- Their shapes can vary (hence they can shape-shift) but the most stable shape is the ball or ovoid of light. Shapes between a spheroid and a cylinder, or lenticular, are also possible as the plasma membrane is resilient and elastic and can be stretched by the denser matter inside. Just like amoeba they can generate temporary limbs (i.e. pseudopods).

- They can expand and contract quite significantly (i.e. size-shift) as they are tenuous (i.e. the particles are far and

wide enabling significant changes in size by increasing or decreasing inter-particle distance).

- They are able to pass through each other in the same way that objects composed of collisionless plasma or dark matter do.
- They have very low total rest mass which results in significant wave properties.
- Misty irregularly formed primitive plasma life forms also exist.

Some ancient cultures have described bioplasma bodies which are coupled to our carbon-based bodies as “souls.” This is not surprising due to their quasi-quantum behaviour, their unusual methods of transport, apparent ability to effect action at a distance, and decoupling on the death of the carbon-based body. In this connection, we should note that the concept of plasma is a relatively modern one. The term “plasma” was coined by Irving Langmuir around 1929 and modern plasma physics only began in the twentieth century. A thousand years ago the concept of plasma did not exist, except perhaps in the notion of the “fire element.”



According to Dark Plasma Theory, meteors and asteroids contain an envelope of dark plasma. Persons using “dark sight” should see a much larger halo of light around meteors that emit dark light.

TYPES OF ENCOUNTERS WITH PLASMA LIFE FORMS

Encounters with plasma life forms can be classified as follows:

- Type 1 (Ordinary) Encounter: This is an encounter with the ordinary plasma component of the life form using the cognitive-sensory system of our carbon-based body in our familiar ordinarily visible Earth and using “ordinary sight.”
- Type 2 (Dark) Encounter: This is an encounter with a dark plasma component of the life form using the cognitive-sensory system of our bioplasma body in Earth’s dark biosphere and using “dark sight.”
- Type 3 (Superposed) Encounter: This is an encounter where there is dual awareness – both the cognitive-sensory systems of the carbon-based body and bioplasma body are operating. In this case, the dark component of the plasma life form in the counterpart Earth is superimposed on its ordinary plasma component; against the backdrop of both our ordinarily visible Earth and segments of Earth’s dark biosphere which are partially visible with our dark sight.

BEHAVIOUR OF PLASMA LIFE FORMS

Behaviour can vary due to the diversity of plasma life forms. Plasma life (let’s say with intelligence equivalent to octopuses) may express their curiosity by coming near to see or feel objects that seem strange to them from their frame of reference. More intelligent life forms (equivalent to the intellectual capacity of Homo sapiens or higher) may actually conduct experiments. Groups of plasma life forms

may exhibit swarm behaviour (similar to bats, birds and fishes) with synchronised movements.

BIOMECHANICS OF PLASMA LIFE FORMS

Dark plasma life forms move generally by neutralising or reversing their electric charge and/or redistributing the electric charges in their bodies relative to the background (dark) electric field of the Earth. They may also move by changing their density. Another method of active transport is by sucking in particles through their orifices in the direction of the motion and/or spewing out particles from the opposite orifice. The suction generates a drift and the spewing out a thrust.

They may also use Birkeland currents (often described as “ley lines”) within the counterpart dark plasma Earth to zip from one location to another like maglev trains. Hence, there are many methods of locomotion for the huge variety of plasma life forms



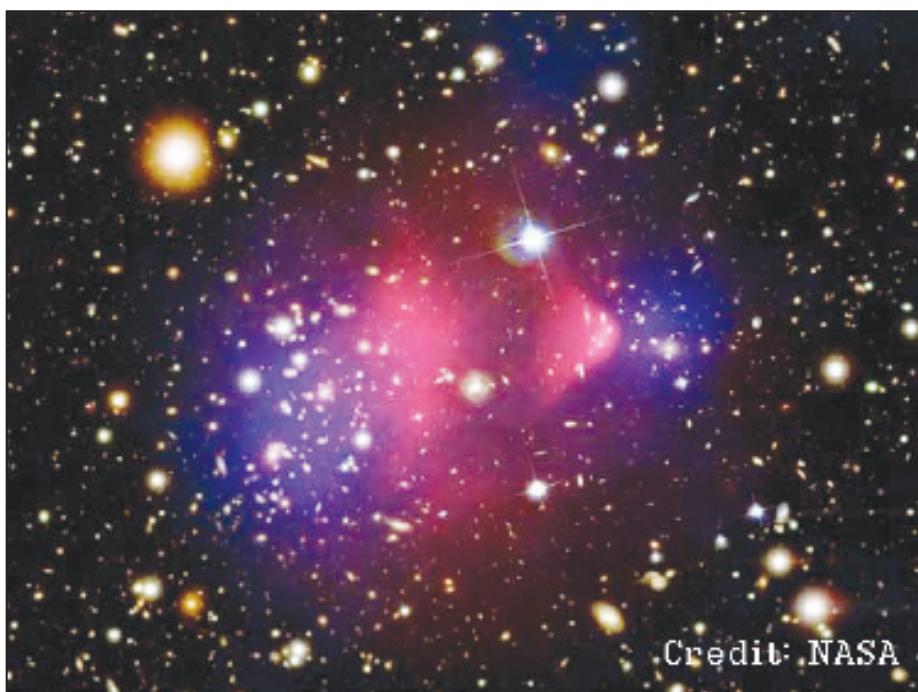
Dark Plasma Theory holds that the bodies of plasma life forms that we encounter are molded by our expectations which radiate out from our own bioplasma bodies. The nearer dark plasma life forms come to you the better they tune-in to thought waves radiating from your bioplasma body. For example, in the Marian apparitions at Fatima (Portugal) in 1917, the children saw a ball of light resolving into a man-like angel as it got nearer to them. Later, as this illustration depicts, the apparition was interpreted to be “Our Lady of Fatima” or the “Blessed Virgin Mary.”

and this may be true even for a single plasma life form – just as seagulls can walk, swim or fly using different biomechanical manoeuvres. The victim's body participating in an "alien abduction" is the dark bioplasma body – not the carbon-based body which undergoes sleep paralysis during these episodes. The body can be transported through electromagnetic guides (analogous to transportation via "ley lines").

Why do some people see them and some don't?

Dark plasma life forms emit dark electromagnetic waves. Humans who can activate the sensory systems of their dark bioplasma bodies can use their "dark sight" to view these life forms. By switching-off relevant (and specific) brain circuits, a person may transfer his or her locus of awareness to a bioplasma body with the relevant sensory apparatus (which is sensitive to the right frequencies) to be able to view the plasma life forms currently inhabiting our counterpart Earth. When the bioplasma body's sensory systems are activated, the body becomes partially or wholly visible to the inhabitants in the dark biosphere – thus inviting interactions from nearby observers (if any).

UFO sightings often occur when a person is taking a long car ride in a featureless area (like a desert). This provides the ideal conditions for a person to go into a meditative state and cause the transfer of the locus of awareness to parallel bodies with different cognitive-sensory systems – landing them in our plasma-based counterpart Earth. In



This image shows NASA's rendition of gigantic halos of dark matter in galaxies passing right through each other in the Bullet Cluster.

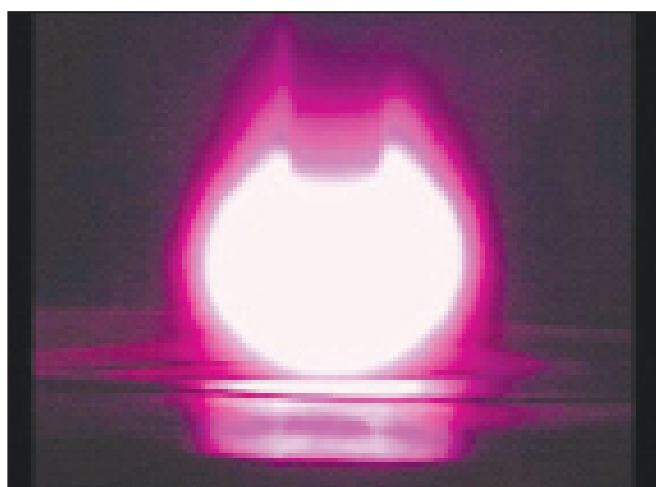
this type of encounter, it is not so much a case of the aliens visiting our visible Earth but it is we who are dropping-by, uninvited, into an alien Earth environment. This is a Type 2 encounter if the ordinary Earth environment completely disappears and you find yourself in a completely new environment. To a dark plasma life form living in the dark biosphere, you will be viewed as an alien and it would be justifiably curious or frightened.

However, witnesses of alien abductions and Marian apparitions (such as at Fatima) often view the counterpart dark Earth environment superimposed on the ordinarily visible physical dense Earth (i.e. a Type 3 encounter). In this scenario, it can get somewhat confusing when our locus of awareness oscillates between the two bodies (and their corresponding sensory-cognitive systems) as the two Earth environments (i.e. the ordinarily visible Earth and the dark biosphere) become layered on top of each other. This superimposition explains why we may see dark plasma objects against an ordinary matter background. For example, we may see dark plasma blood (projected by the thought waves of the observer) on an ordinary matter wall.

How do they go through walls?

The bioplasma body is composed of collisionless dark plasma. This allows it to pass through walls just as billions of dark matter particles are right now passing through your room and your body. The image above is NASA's rendition showing gigantic halos of dark matter in galaxies passing right through each other in the Bullet Cluster.

If for some reason, the density increases in the bioplasma body, the body may have difficulty in penetrating walls (this phenomenon has been witnessed by Robert Monroe in his



Embedded in bioplasma bodies are cells that function as "plasma antennae" that tune-in and receive dark electromagnetic waves generated by other bioplasma bodies. The above photo is of an actual microwave plasma antenna. (Source: Angstrom Laboratory, Uppsala Universitet)

Out-of-Body Experiences and recorded in his book *Journeys Out of the Body*).

What about the marks on the body?

It has been documented in the metaphysical literature that marks on the carbon-based body may be caused by impacts to the dark “physical-etheric” bioplasma body. This is often referred to as “repercussions” in the general metaphysical literature. The body of a human being which participates in an “alien abduction” is not the carbon-based body but the counterpart bioplasma body. Nevertheless, if this bioplasma body is impacted, the carbon-based body can be impacted – similar to what happens in certain reported reincarnation cases. This may be due to the responses of biochemical fields within the carbon-based body to ordinary electromagnetic fields caused by the ordinary plasma generated by the dark bioplasma body when its density increases.

Where did the aliens go after I took the medication?

Medication cuts-off awareness of alien attacks on our bioplasma bodies because it normalises brain functions. Certain brain circuits that were “switched-off” allowed the locus of awareness to be transferred to the bioplasma body which had the necessary sensory systems to view the relevant plasma life forms. But when medication is taken, these circuits are restored and “switched-on” again in the carbon based biochemical body. This cuts-off conscious contact with the counterpart Earth environment (and thereby also deactivates the bioplasma body causing it to become invisible to the attacker and free from attacks).

The relevant brain circuits (particularly in the parietal and temporal lobes) may be switched-off physically through surgery, accidents like brain injuries, transcranial magnetic stimulation and ambient electromagnetic fields which simulates brain lesions; chemically through psychoactive or spiritual drugs; psychologically through meditation or hypnosis or during sleep.

AN ADVANCED PARALLEL CIVILISATION

The SETI (Search for Extra-Terrestrial Intelligence) Institute's program objective in trying to find intelligent life outside Earth is to some laudable. However, there is much research that can be done on alien life right here on Earth. The aliens that are most frequently encountered and that can be considered “intelligent life” do not travel at light speed within our low energy physical universe nor do they have any technology to undertake intergalactic or interstellar travel. They are co-inhabitants of the Earth system – which

includes the visible Earth and its dark matter counterpart.

Although they co-evolved with us, plasma life forms in Earth's dark biosphere are likely to have evolved at a faster rate. V.N. Tsytovich of the Russian Academy of Sciences argues that helical dust structures in plasma would have a “faster evolutionary rate” in his 2007 paper on plasma life forms. This is also supported by the author's concept of “accelerated morphogenesis” of bioplasma bodies which was published in 2006. Hence, this plasma-based civilisation, having a headstart in evolution, could be expected to be more advanced than us.

As a civilisation they would have government, political and social structures, as well as culture. They are likely to be superior in communications technology using bioplasma bodies since they would obviously be more familiar with these types of bodies compared to us. This may allow them to communicate with our bioplasma bodies directly (we may interpret this as telepathy or messages from unspecified entities). They may even fear that we will harm them with our growing technological sophistication. It may very well be appropriate now to embark on a SITI (Search for Intra-Terrestrial Intelligence) project which will bring us closer to our exotic neighbours in Earth's dark biosphere.

CONCLUSION

Dark Plasma Theory explains a wide variety of phenomena associated with genuine sightings of aliens, ghosts, deities, jinns and angels by both individuals and groups – using an internally consistent scientific framework. These sightings betray the presence of plasma-based life forms originating from a counterpart sister Earth gravitationally coupled to the visible Earth. These terrestrial aliens (whether they be ghosts, fairies, grays, deities or angels) share common properties and may even shed light on the evolution of carbon-based life and consciousness on the Earth that we are most familiar with. The history and evolution of plasma life forms and humans have indeed become intertwined – a symbiosis which is likely to continue into the future.

To understand the origins and evolution of human beings, we will therefore have to study plasma life forms within a scientific framework, using the latest scientific research to extend the initial understanding gleaned from religious and metaphysical sources. We may inevitably find that the Darwinian tree of life, identified on Earth only recently, both originates and extends into parallel Earths.

For further information, read the author's books Our Invisible Bodies, Between the Moon and Earth and Brains and Realities, all available via bookstores on the Internet.



JAY ALFRED is the author of Dark Plasma Theory (formerly described as “plasma metaphysics”). Jay has been researching dark plasma life forms since 2001. He is the author of three books on the Dark Plasma Theory: *Our Invisible Bodies* (2006), *Between the Moon and Earth* (2007) and *Brains and Realities* (2006), which are available on all Amazon, Borders and other online bookshops. He is the Research Director of Dark Plasma Life Research Organization and a Consultant at ARPAST (Arkansas Paranormal and Anomalous Studies Team), a science-based research group that studies anomalous and currently unexplained phenomena. His organisation's website is www.dapla.org.